



FASTNERS, NUTS, BOLTS, WASHERS AND ANCHORS

CONTENTS

NO.	PARTICULARS	PAGE NO.
01	Fasteners	2
02	Nuts	3
03	Washers	4
04	Inserts	5
05	Bolts	6
06	Anchors	7



NERFASTE



Types :

- 1) Philips head screw.
- 2) Cheese head screw
- 3) Pan head screw
- 4) Combination head screw
- 5) Counter sunk screw
- 6) Round head screw
- 7) Raised head screw
- 8) Terminal screw
- 9) Grub screw with slot.
- 10) Thumb screw.

Specifications:

- BS 4183
- BS 3643
- BS 57
- BS 93
- IS z1367 / 1366

Length / Size : As per custom designs
and requirements



Finish and coating:

- Natural
- Nickel
- Tin

Threads:

- ISO Metric (MM threads)
- BA threads
- BS WThreads (inches)
- UNC and UNF threads



NUTS



Type:

- 1) Hex Nuts :
 - (a) Hex Lock nuts.
 - (b) Hex Rivet Nuts.
 - (c) Hex Full nuts.
- 2) Square Nuts.
- 3) Wing Nuts.
- 4) Jump Nuts.

Specifications :

- BS 3692
- BS 57
- IS 1363
- IS 1367

Threads :

- ISO metric (mm)
- BA
- BSW
- UNC
- UNF
- BSP
- BSPT
- NPT
- NPTF

Finishing / Coating / Plating:

- Nickel
- Electro -Tin
- Silver
- Copper – nickel
- Natural Brass
- Chromium nickel
- Copper
- SS
- Bronze





WASHERS



Types:

- 1) Plain Washers.
- 2) Circlips washers
- 3) Square washers
- 4) Grinding washers
- 5) Teeth washers
- 6) Shims washers
- 7) Split lock washer
- 8) Shake proof washer.
- 9) Belivelly spring washer
- 10) Helical spring lock washer
- 11) Locking washer
- 12) Square washers.
- 13) Fan Disc Lock washers

Finishing / Coating / Plating:

- Nickel
- Tin
- Silver
- Copper – nickel
- Natural Brass
- Chromium nickel
- Copper

Size:

Various sizes available as per requirement

Specifications:

- DIN 125, 126, 433, 127, 128.
- BS 4320 : 1968

Material:

- Brass (sheet metal)
- Copper
- Stainless steel
- Copperbronze.
- Phosphorous bronze.
- Any other non ferrous material.





INSERTS



TYPES:

- 1) Square Inserts
- 2) Round Inserts
- 3) Hexagonal Inserts

KNURLING OPTIONS:

- Diamond
- Straight
- Unidirectional

FEATURES:

Our brass inserts are designed with various knurl to provide a high torque-pull out resistance for threaded assembly in plastic. They also carry a strong metal thread to strengthen the plastic components for assembly.

- Deep groove for maximum pull out resistance.
- Inner Diameter after threads with very close tolerance

FINISH :

Generally brass inserts comes with the natural, nickel & tin finish. But surface finishes such as chromium, silver, gold, etc. can be done as per customer's requirement.

THREADS:

ISO metric (MM threads).

BA threads.

BSW threads (inches).

UNC, UNF threads.

Any threads as per custom design





ANCHORS



TYPES:

- 1) Hex bolts.
- 2) Carriage bolts
- 3) Eye bolts
- 4) Square bolts
- 5) U shape bolts
- 6) T shape bolts
- 7) Wing bolts
- 8) Structure bolts
- 9) Hanger bolts
- 10) Indented hex bolts
- 11) Flange bolts

Specification followed :

- BS 4183
- BS 3643
- BS 93
- IS 1366
- IS 1367



BOLTS



Types:

- 1) Spring anchors.
- 2) Plain anchors
- 3) Wood anchors
- 4) Drop anchors
- 5) Pool anchors
- 6) Sleeve anchors.
- 7) Concrete Anchors
- 8) Slotted anchors.
- 9) Round stud anchors
- 10) Knurling anchors

Size:

From 5/32, 4mm to 16 mm 1/4" to 5/8"atures:

- Embossed surface provides extra grip.
- Corrosion resistant.
- Can be used in variety of materials like concrete, stone, wood, hollow concrete panels, etc.
- Can withstand high temperatures.

Internal tapering for auto lock

Finish / coating :

Primarily available in natural brass finishing.

Optional coating of nickel or copper available





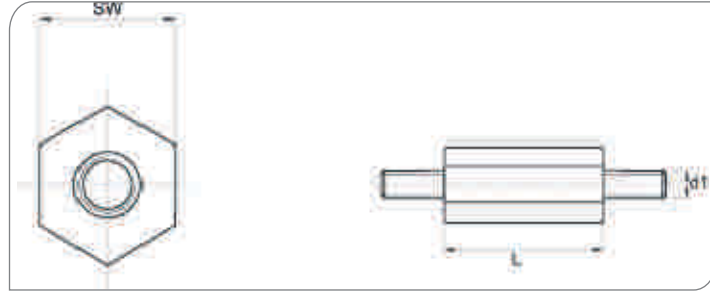
SPACERS

CONTENTS

NO.	PARTICULARS	PAGE NO.
01	Spacer bolt with external thread	
02	Spacer bolt with internal thread	
03	Spacer bolt with internal/external thread	



SPACER BOLT WITH EXTERNAL THREAD



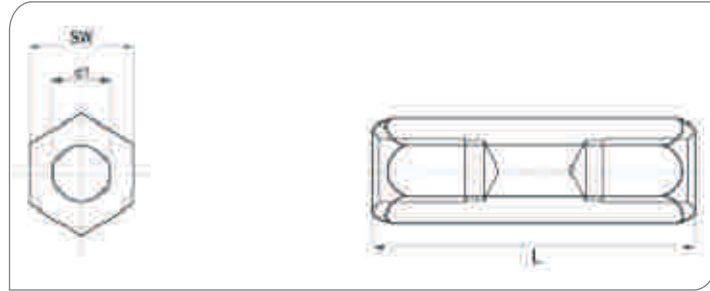
Material : Polyamide with Brass fitting

Tolerance: + /-0,2 mm

No.	DI	L	SW
01	M3	15	6, 35
02	M3	20	6, 35
03	M3	25	6, 35
04	M3	30	6, 35
05	M3	35	6, 35
06	M3	40	6, 35
07	M3	45	6, 35
08	M3	50	6, 35
09	M4	15	8
10	M4	20	8
11	M4	25	8
12	M4	30	8
13	M4	35	8
14	M4	40	8
15	M4	45	8
16	M4	50	8



SPACER BOLT WITH INTERNAL THREAD



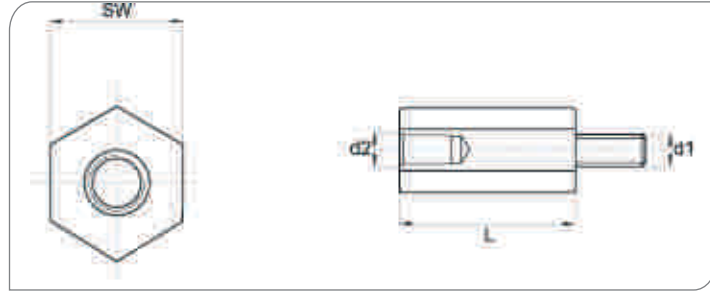
Material : Polyamide with Brass fitting

Tolerance: + /-0,1 mm

No.	DI	L	SW
01	4 - 40 UNC	5	5
02	4 - 40 UNC	6	5
03	4 - 40 UNC	8	5
04	4 - 40 UNC	10	5
05	4 - 40 UNC	12	5
06	4 - 40 UNC	15	5



SPACER BOLT WITH INTERNAL / EXTERNAL THREAD



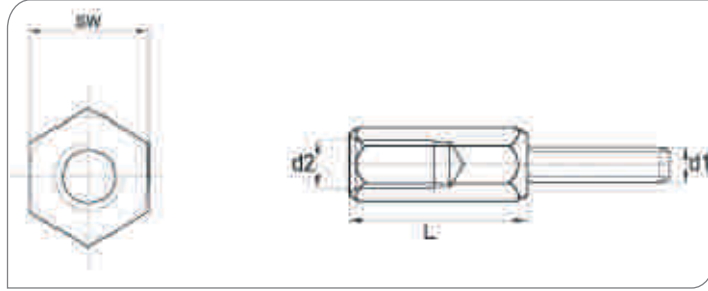
Material : Polyamide with Brass fitting

Tolerance: + /-0,2 mm

No.	DI = D2	L	SW
01	M3	15	6, 35
02	M3	20	6, 35
03	M3	25	6, 35
04	M3	30	6, 35
05	M3	35	6, 35
06	M3	40	6, 35
07	M3	45	6, 35
08	M3	50	6, 35
09	M4	15	8
10	M4	20	8
11	M4	25	8
12	M4	30	8
13	M4	35	8
14	M4	40	8
15	M4	45	8
16	M4	50	8



SPACER BOLT WITH INTERNAL / EXTERNAL THREAD



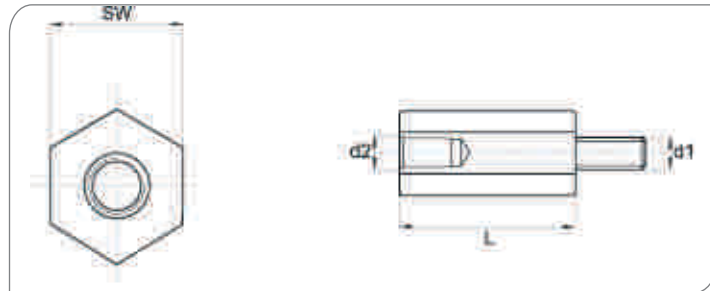
Material : Nickel plated Brass fitting

Tolerance : +/- 0,2 mm

No.	D2	D1	L	SW
01	4 - 40 UNC	4 - 40 UNC	5	5
02	4 - 40 UNC	4 - 40 UNC	6	5
03	4 - 40 UNC	M3	5	5
04	4 - 40 UNC	M3	6	5



SPACER BOLT WITH INTERNAL / EXTERNAL THREAD



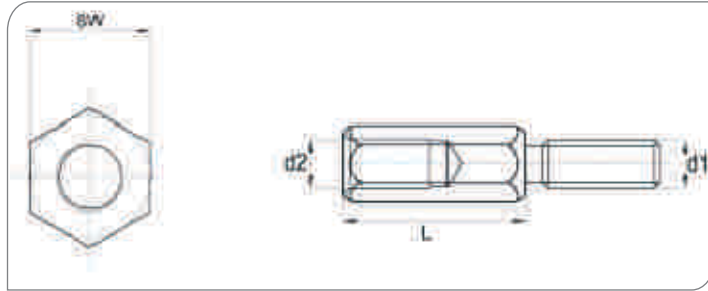
Material : Polyamide with Brass fitting

Tolerance: + /-0,2 mm

No.	D1 = D2	L	SW
01	M3	15	6, 35
02	M3	20	6, 35
03	M3	25	6, 35
04	M3	30	6, 35
05	M3	35	6, 35
06	M3	40	6, 35
07	M3	45	6, 35
08	M3	50	6, 35
09	M4	15	8
10	M4	20	8
11	M4	25	8
12	M4	30	8
13	M4	35	8
14	M4	40	8
15	M4	45	8
16	M4	50	8



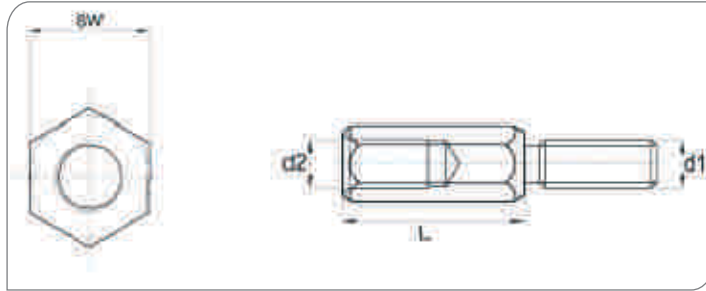
SPACER BOLT WITH INTERNAL / EXTERNAL THREAD



No.	DI = D2	L	SW	No.	DI = D2	L	SW
01	M2	5	4	01	M 2.5	5	4
02	M2	6	4	02	M 2.5	6	4
03	M2	8	4	03	M 2.5	8	4
04	M2	10	4	04	M 2.5	10	4
05	M2	12	4	05	M 2.5	12	4
06	M2	15	4	06	M 2.5	15	4
07	M2	18	4	07	M 2.5	20	4
08	M2	20	4	08	M 2.5	18	4
09	M2	25	4	09	M 2.5	25	4
10	M2	30	4	10	M 2.5	30	4
11	M2	35	4	11	M 2.5	35	4
12	M2	40	4	12	M 2.5	40	4
13	M2	45	4	13	M 2.5	45	4
14	M2	50	4	14	M 2.5	50	4
				15	M 2.5	5	5
				16	M 2.5	6	5
				17	M 2.5	8	5
				18	M 2.5	10	5
				19	M 2.5	12	5
				20	M 2.5	15	5
				21	M 2.5	18	5
				22	M 2.5	20	5
				23	M 2.5	25	5
				24	M 2.5	30	5
				25	M 2.5	35	5
				26	M 2.5	40	5
				27	M 2.5	45	5
				28	M 2.5	50	5
				29	M 2.5	55	5
				30	M 2.5	60	5



SPACER BOLT WITH INTERNAL / EXTERNAL THREAD

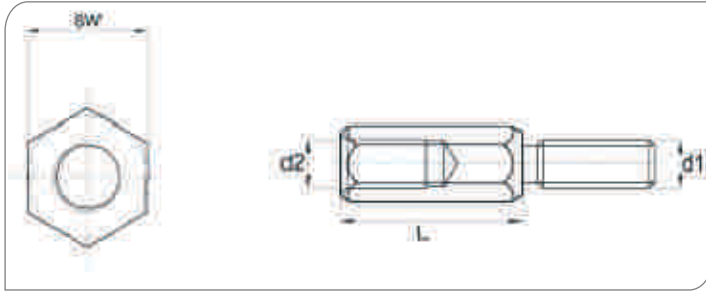


No.	DI = D2	L	SW	No.	DI = D2	L	SW
01	M 3	5	5	01	M 4	5	7
02	M 3	6	5	02	M 4	6	7
03	M 3	8	5	03	M 4	8	7
04	M 3	10	5	04	M 4	10	7
05	M 3	12	5	05	M 4	12	7
06	M 3	15	5	06	M 4	15	7
07	M 3	18	5	07	M 4	18	7
08	M 3	20	5	08	M 4	20	7
09	M 3	25	5	09	M 4	25	7
10	M 3	30	5	10	M 4	30	7
11	M 3	35	5	11	M 4	35	7
12	M 3	40	5	12	M 4	40	7
13	M 3	45	5	13	M 4	45	7
14	M 3	50	5	14	M 4	50	7
15	M 3	55	5	15	M 4	55	7
16	M 3	60	5	16	M 4	60	7
17	M 3	5	5.5	17	M 4	65	7
18	M 3	6	5.5	18	M 4	70	7
19	M 3	8	5.5	19	M 4	75	7
20	M 3	10	5.5	20	M 4	80	7
21	M 3	12	5.5	21	M 4	85	7
22	M 3	15	5.5	22	M 4	90	7
23	M 3	18	5.5	23	M 4	95	7
24	M 3	20	5.5	24	M 4	100	7
25	M 3	25	5.5				
26	M 3	30	5.5				
27	M 3	35	5.5				
28	M 3	40	5.5				
29	M 3	45	5.5				
30	M 3	50	5.5				
31	M 3	55	5.5				
32	M 3	60	5.5				
33	M 3	65	5.5				
34	M 3	70	5.5				

Contd. on next page



Contd. from earlier page



No.	DI = D2	L	SW	No.	DI = D2	L	SW
01	M 5	8	8	01	M 4	10	10
02	M 5	10	8	02	M 4	12	10
03	M 5	12	8	03	M 4	15	10
04	M 5	15	8	04	M 4	18	10
05	M 5	18	8	05	M 4	20	10
06	M 5	20	8	06	M 4	25	10
07	M 5	25	8	07	M 4	30	10
08	M 5	30	8	08	M 4	35	10
09	M 5	35	8	09	M 4	40	10
10	M 5	40	8	10	M 4	45	10
11	M 5	45	8	11	M 4	50	10
12	M 5	50	8	12	M 4	55	10
13	M 5	55	8	13	M 4	60	10
14	M 5	60	8	14	M 4	65	10
15	M 5	65	8	15	M 4	70	10
16	M 5	70	8	16	M 4	75	10
17	M 5	75	8	17	M 4	80	10
18	M 5	80	8	18	M 4	85	10
19	M 5	85	8	19	M 4	90	10
20	M 5	90	8	20	M 4	95	10
21	M 5	95	8	21	M 4	100	10
22	M 5	100	8	22	M 4		



SPACER BOLT WITH INTERNAL THREAD

